

GRAND ARM

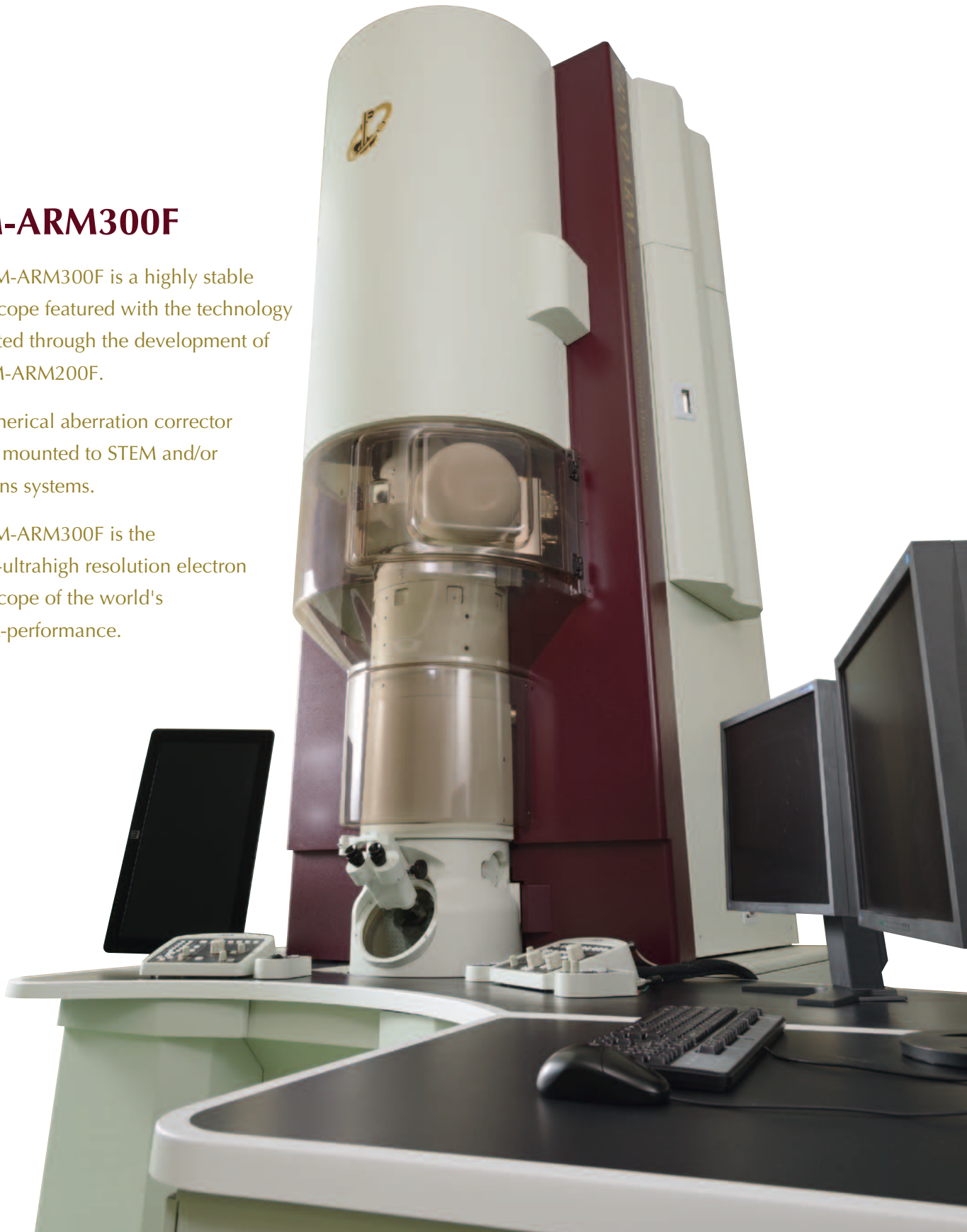
Atomic Resolution Electron Microscope

JEM-ARM300F

The JEM-ARM300F is a highly stable microscope featured with the technology cultivated through the development of the JEM-ARM200F.

The spherical aberration corrector can be mounted to STEM and/or TEM lens systems.

The JEM-ARM300F is the 300kV-ultrahigh resolution electron microscope of the world's highest-performance.

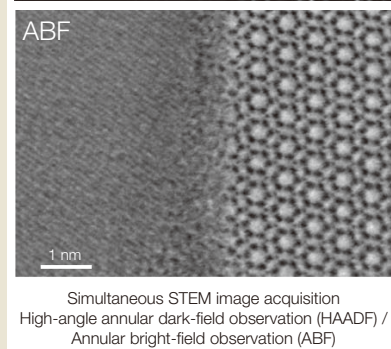
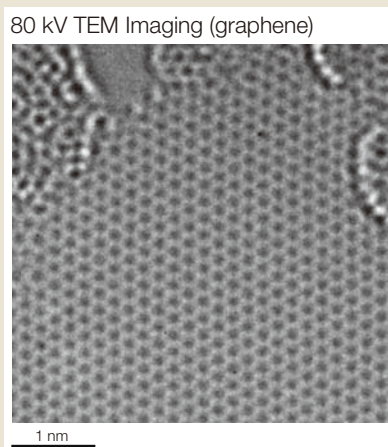
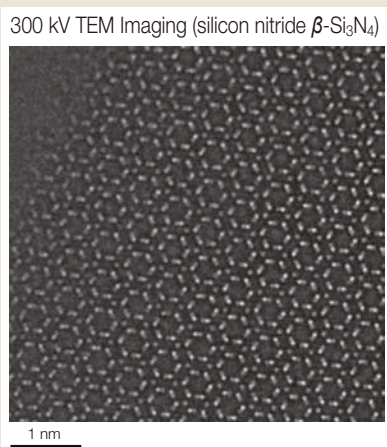
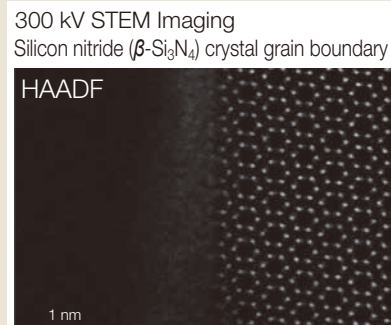
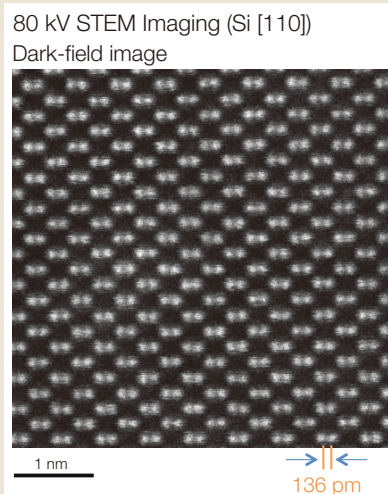
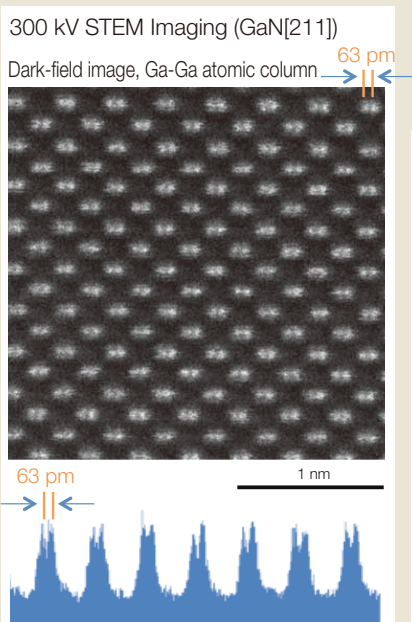


GRAND ARM

Atomic Resolution Electron Microscope

JEM-ARM300F

Atomic Resolution Electron Microscope



Main specifications

Standard accelerating voltage	300kV, 80kV	
Version	Ultra-high resolution configuration	High resolution configuration
STEM resolution (300 kV) when STEM corrector is configurd	0.063 nm	0.082 nm
TEM resolution (300 kV) when TEM corrector is configurd	Lattice resolution: 0.05 nm Nonlinear information limit: 0.06 nm Linear information limit: 0.09 nm	Lattice resolution: 0.06 nm Nonlinear information limit: 0.08 nm Linear information limit: 0.12 nm

Installation room

Floor space	7,000 (width) × 8,000 (depth)
Ceiling height	Double-corrector configuration (STEM/TEM) Crane hook position: 3,600 (height) or more * Depends on the specification.
Carry-in entrance	1,300 (width) × 2,000 (height) * When the TEM corrector is configurd, the height becomes 2,200 or more.

(unit:mm)

External appearance and specifications are subject to change without notice.



High technology for quality assurance and the environment.

Certain products in this brochure are controlled under the "Foreign Exchange and Foreign Trade Law" of Japan in compliance with international security export control. JEOL Ltd. must provide the Japanese Government with "End-user's Statement of Assurance" and "End-use Certificate" in order to obtain the export license needed for export from Japan. If the product to be exported is in this category, the end user will be asked to fill in these certificate forms.

JEOL JEOL Ltd.

1-2 Musashino 3-chome Akishima Tokyo 196-8558 Japan Sales Division Telephone:+81-42-528-3381 Facsimile:+81-42-528-3386

<http://www.jeol.com/>

•AUSTRALIA & NEW ZEALAND/ JEOL(AUSTRALASIA) Pty.Ltd. Suite 1, L2 18 Aquatic Drive - Frenchs Forest NSW 2086 Australia •BELGIUM/ JEOL (EUROPE) B.V. Planet II, Gebouw B Leuvensesteenweg 542, B-1930 Zaventem Belgium •CANADA/ JEOL CANADA, INC. 3275 1ere Rue, Local #8 St-Hubert, QC J3Y-8Y6, Canada •CHINA/ JEOL(BEIJING) CO., LTD. Room B1010/1110, Wantong New World Plaza No. 2 Fuchengmenwai Street, Xicheng District, Beijing 100037, P.R.China •EGYPT/ JEOL SERVICE BUREAU 3rd Fl. Nile Center Bldg., Nawal Street, Dokki, (Cairo), Egypt •FRANCE/ JEOL (EUROPE) SAS Espace Claude Monet, 1 Allée de Giverny 78290, Croissy-sur-Seine, France •GERMANY/ JEOL (GERMANY) GmbH Oskar-Von-Miller-Strasse 1a, 85386 Eching, Germany •GREAT BRITAIN & IRELAND/ JEOL (U.K.) LTD. JEOL House, Silver Court, Watchmead, Welwyn Garden City, Herts AL7 1LT, U.K. •ITALY/ JEOL (ITALIA) S.p.A. Palazzo Pacinotti - Milano 3 City, Via Ludovico il Moro, 6/A 20080 Basiglio(MI) Italy •KOREA/ JEOL KOREA LTD. Dongwoo Bldg. 7F, 1443, Yangjae Daero, Gangdong-Gu, Seoul, 134-010, Korea •MALAYSIA/ JEOL(MALAYSIA) SDN.BHD. 508, Block A, Level 5, Kelana Business Center, 97, Jalan SS 7/2, Kelana Jaya, 47301 Petaling Jaya, Selangor, Malaysia •MEXICO/ JEOL DE MEXICO S.A. DE C.V. Arkansas 11 Piso 2 Colonia Napoles Delegacion Benito Juarez, C.P. 03810 Mexico D.F., Mexico •SCANDINAVIA/ SWEDEN JEOL (Skandinaviska)AB: Hammarbacken 6A, Box 716, 191 27 Sollentuna Sweden •SINGAPORE/ 2 Corporation Road #01-12 Corporation Place Singapore 618494 •TAIWAN/ JIE DONG CO., LTD. 7F, 112, Chung Hsiao East Road, Section 1, Taipei, Taiwan 10023 Republic of China •THE NETHERLANDS/ JEOL (EUROPE) B.V. Lireweg 4, NL-2153 PH Nieuw-Vennep, The Netherlands •USA/ JEOL USA, INC. 11 Dearborn Road, Peabody, MA 01960, U.S.A.

•Please confirm other territories by the web site.

No. 1301H483C Printed in Japan, Jp